

# PW-NCA-3S

## Network Control Annunciator

### General

The PW-NCA-3S is a remote annunciator for the PTW-3300S series fire control panels. It is equipped with a large 1024x600 pixel back-lit numeric LCD display which uses a simple menu system complete with a directional keypad and switches for Enter, Menu, Cancel. It also has LEDs as well as common control switches and LEDs for Power ON, Battery/DC ON, Fire, Output Activation, Delayed Timer Activated, Feedback, System Trouble, Point Disabled, CPU Failure, Fault, Silence, Test Mode. The PW-NCA-3S can be programmed to show different points than the main panel. The PW-NCA-3S back box needs to be ordered separately.

### Features

- Full supervision of all inputs and network integrity.
- 15 LED indicators: Power; Battery; Fire Alarm; Linkage; Delayed start; Supervisory; Point Disabled; System Failure; Feedback; Trouble; Signals Silenced; Self-test.
- Program keypad: Alphanumeric keypad and Virtual full QWERTY keypad.
- Common buttons for navigation

### Specifications

#### **ELECTRICAL SPECIFICATIONS**

**DIMENSIONS:** Length: 465 mm. Width: 295mm. Height: 95mm.

**Temperature:** 0 - 40 C.

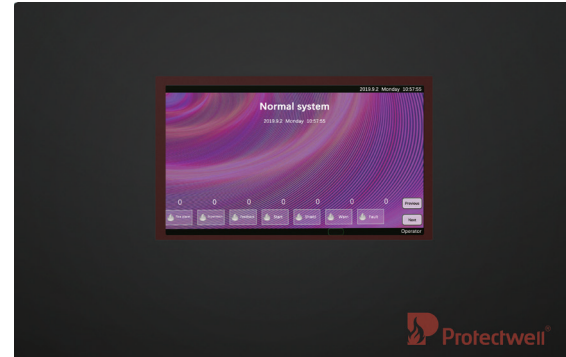
**Humidity:** ≤ 95% RH, non-condensing

**Main Current:** AC 220 + 10% AC 220 - 15% (50 ± 1Hz)

**DC Standby Current:** 24VDC/24Ah.

### Installation

The PW-NCA-3S is connected to the PTW-3300S series fire control panels using CAN BUS connection. The connection is power limited and supervised. Up to thirty-two (32) PW-NCA-3S remoter annunciators can be connected.



PW-NCA-3S mounted in a 3S-NCA-SBB enclosure

### Product Line Information

**PW-NCA-3S:** Network Control Annunciator.

**3S-NCA-SBB:** Network Control Annunciator backbox.

**Proworkse-3S:** Proworkse Workstation Graphics software.

**LCD-8800:** LCD Floor Display.

**LDM-64-3S:** Lamp Driver Annunciator Control Module, 64 Points.

**LDM-E64-3S:** Lamp Driver Annunciator Expander module, 64 Points.

**YFCB2-S-ST:** Fiber optic converter Single mode.

**YFCB2-M-ST:** Fiber optic converter Multi mode.